

Taiga

Design by Johanna Lindahl / Mijo Crochet



Abbreviations:

Sl st – slip stitch

Ch – chain

Sc – single crochet

Dc – double crochet

2 dc tog – 2 double crochet together

Picot with 2 ch*

Puff *

Stitches marked with * are described [here](#).

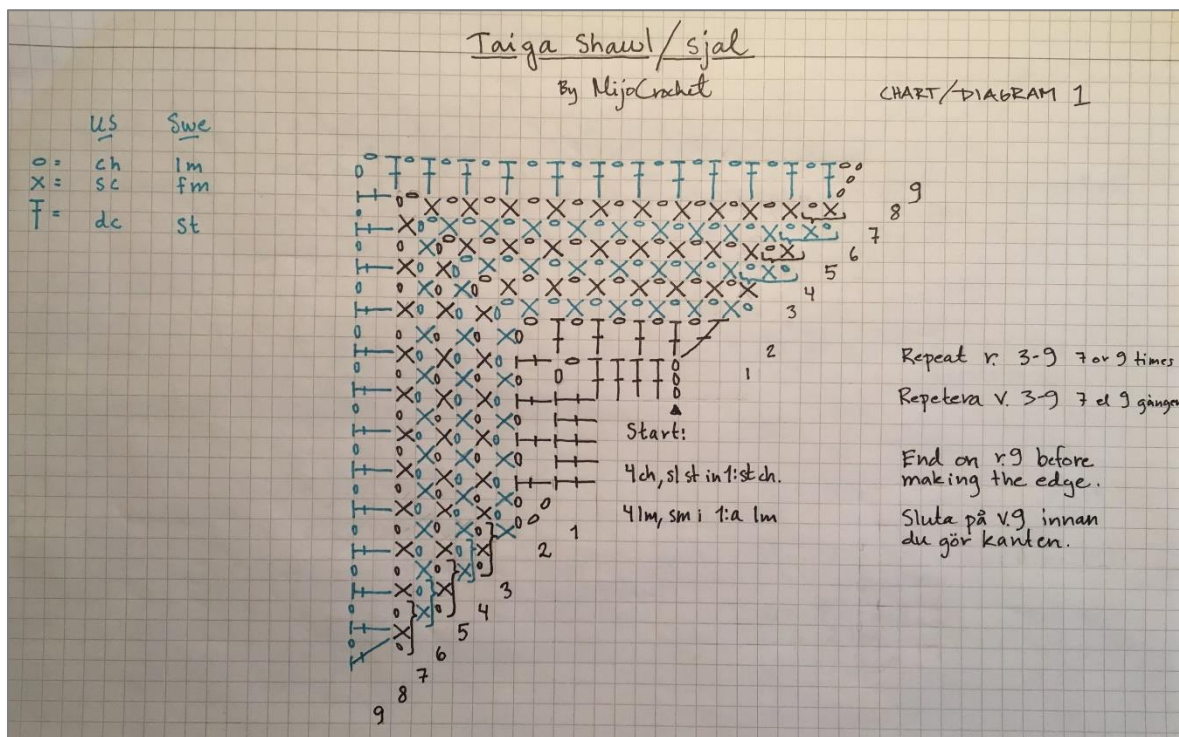
Start by crochet the shawls body (chart 1). You will repeat row 3-9 **seven** or **nine** times depending on the size you like for your shawl. It's important that you end with a row 9 before you start with the border.

If you have repeated row 3-9 **seven** times you use chart 2 to make the border.

Note! Row 9 is drawn in this chart, but you should not repeat it.

If you have repeated row 3-9 **nine** times you use chart 3 to make the border.

Note! Row 9 is drawn in this chart, but you should not repeat it.

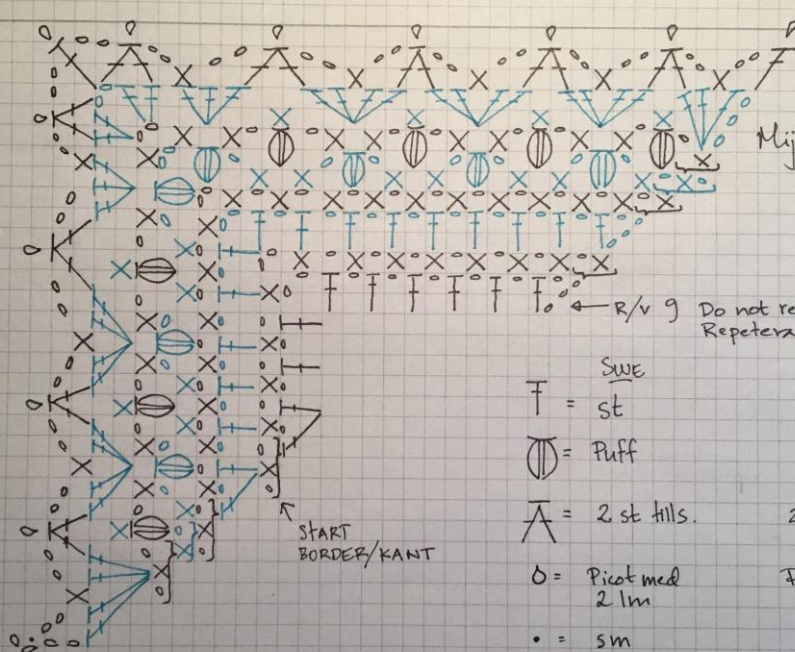


Taiga shawl/sjal

CHART/DIAGRAM 2

IF YOU MADE ROW 3-9 7 TIMES MAKE THIS BORDER

OM DU REPETERADE VARV 3-9 7 GÅNGER GÖR DU DENNA KANT



← R/v 9 Do not repeat/ Repetera ej.

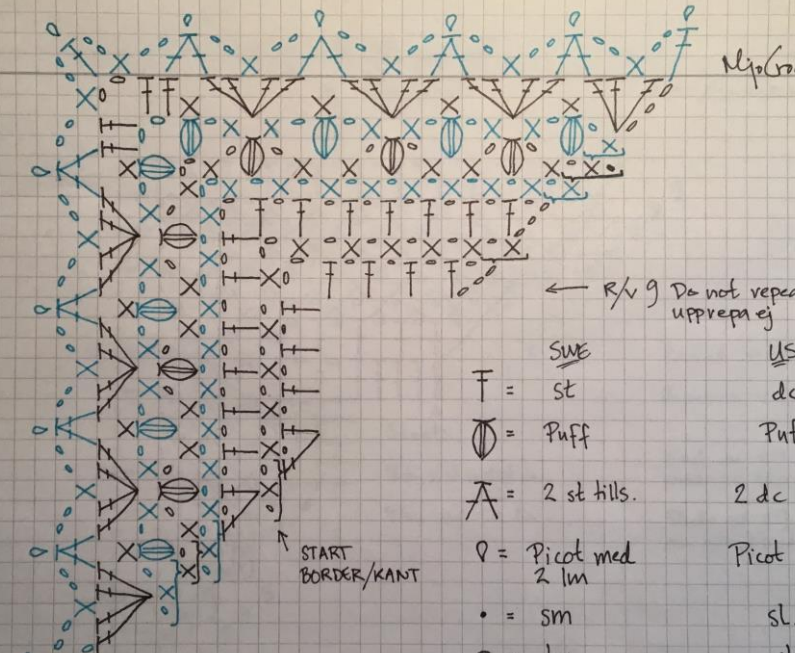
SWE	US
F = st	dc
⊖ = Puff	Puff
Λ = 2 st hills.	2 dc tog.
⊙ = Picot med 2 lm	Picot with 2 ch
• = sm	sl.st.
○ = lm	ch
X = fm	sc

TAIGA SHAWL/ SJAL

CHART/DIAGRAM 3

IF YOU MADE ROW 3-9 9 TIMES MAKE THIS BORDER

OM DU REPETERADE VARV 3-9 9 GÅNGER GÖR DU DENNA KANT



← R/v 9 Do not repeat/ upprepa ej

SWE	US
F = st	dc
⊖ = Puff	Puff
Λ = 2 st hills.	2 dc tog.
⊙ = Picot med 2 lm	Picot with 2 ch
• = sm	sl.st.
○ = lm	ch
X = fm	sc